

Img. 1 - Population divided by social status. (Patagonia youtube channel)

Nature Ecological context

Urbanization, mechanization and mobility arise mainly at the expense of the natural biosphere. Mankind's more demanding demands on material resources such as drinking water, food and energy are reflected in the state of the environment. In addition to local negative interventions in the landscape, there is an increasingly serious climate crisis with extreme weather events.

Mobility Transport context

The mobility of the population and goods causes the view of the planet as one sophisticated logistics network. The construction of infrastructure seems to be a necessary part of the company's development. The necessary construction seems to be a major intervention in the existing urban and landscape environment, making it a strong topic for an active approach.



Img. 2 - Warehouse goods logistics (Steel cities)



Img. 3 - Place Léon Aucoc, Bordeaux (Lacaton Vassal)

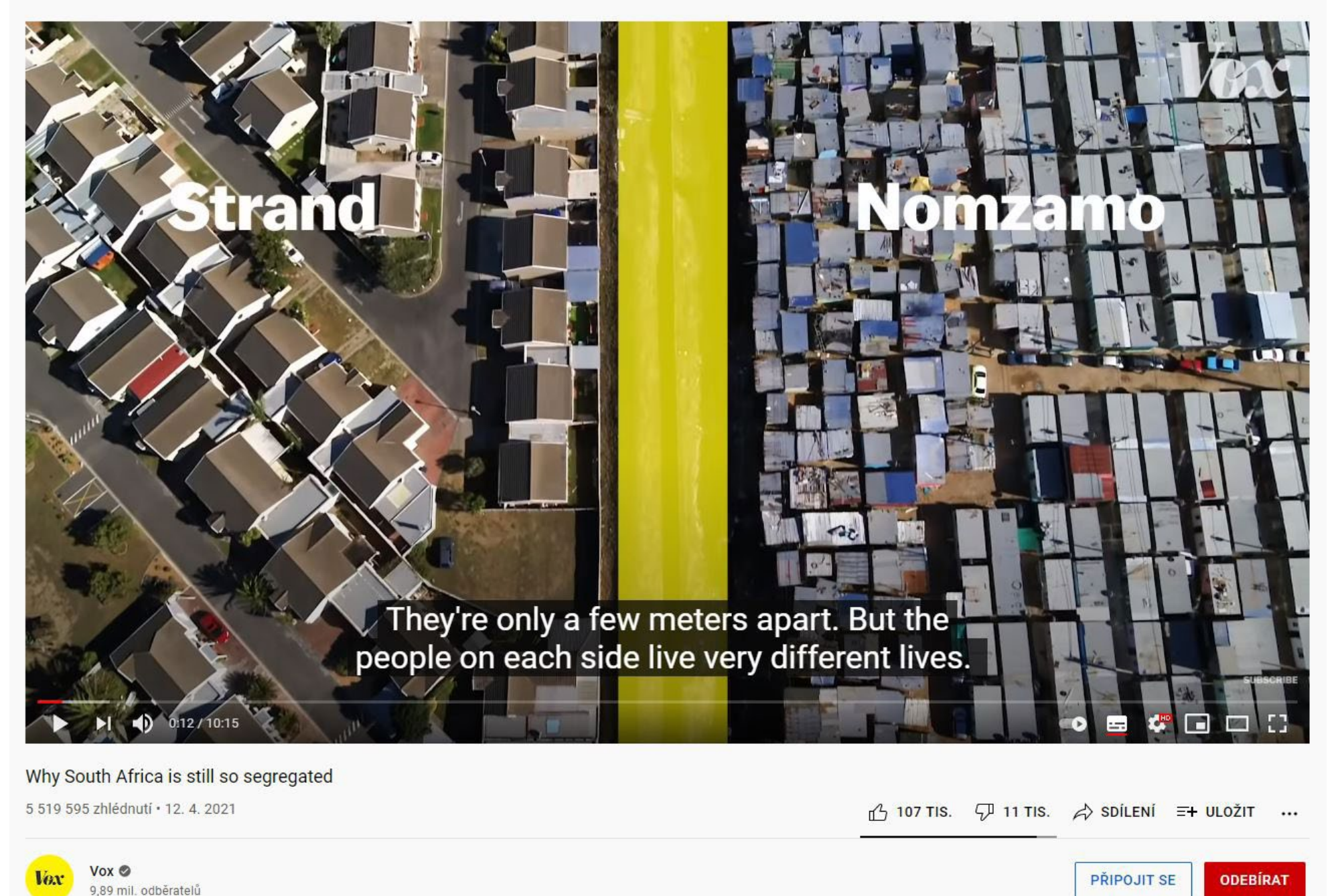
Heritage Cultural context

Active effort to preserve the already existing monumental character of urban spaces. The expert knowledge of an urban planner can hierarchize the given value of spaces and buildings. "From a cultural point of view, such a radical intervention as demolition is the worst option. It is better to understand the existing situation, estimate the strengths and try to improve them slightly."

Society Social context

Apart from material creation, urbanism itself works strongly with the social structure of social space. The phrase "The right to the city", defined by the sociologist Henri Lefebvre, was placed above all man interaction in the creation of cities. (Coleman 2015)

Negative factors affecting contemporary cities such as gentrification, financialization, over-tourism or housing crises are recurring in various forms around the world. These are global problems that secondarily cause tensions in society.



Img. 4 - Population divided by social status. (Vox youtube channel)

Img. 1 - Blue Heart Trailer, Patagonia, Post - Youtube [printscreen time 0.42] 2018-03-23 cit. 2021-09-12 available from <https://www.youtube.com/watch?v=LadB99m1fg>

Img. 2 - FREJLACHOVÁ, Kateřina, MIROSLAV PAZDERA, TADEÁŠ ŘÍHA, et al. Steel cities: the architecture of logistics in Central and Eastern Europe = Ocelová města. Praha: Curych: Galerie VI PER : Park Books, 2019, 360 s. ISBN 978-80-270-7038-1.

Img. 3 - Place Léon Aucoc, Bordeaux, Lacaton Vassal, [online] cit. 2021-09-12 available from <https://www.lacatonvassal.com/index.php?idp=37>

Img. 4 - Why South Africa is still so segregated, Vox, Post - Youtube [printscreen time 0.11] 2021-04-12 cit. 2021-09-12 available from <https://www.youtube.com/watch?v=NvH7JewfgJg&t=13s>